

SALTA

S I B A Y A





Gatehouse

Clubhouse

Retail

Sport & playground

Trail path

Trail path

SALTA

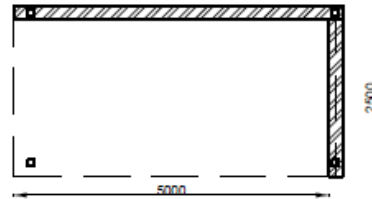
SIBAYA



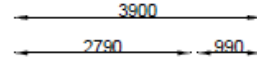


OPTIONAL EXTRAS

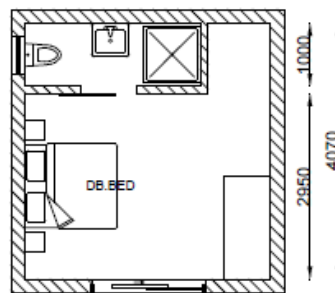
OPTION A



Paved, Covered outdoor entertainment area or Guest parking with 1800mm screen wall

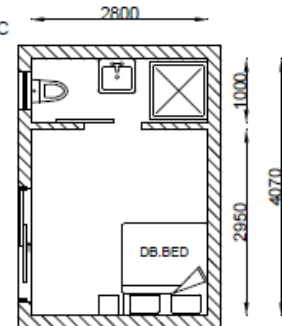


OPTION B



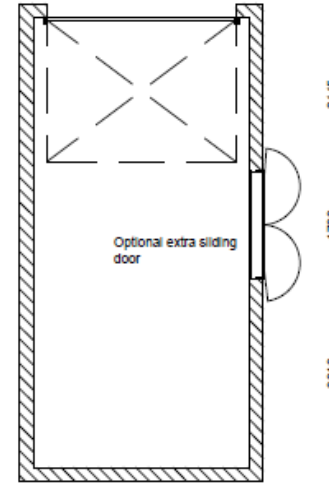
Additional room/office with bathroom

OPTION C



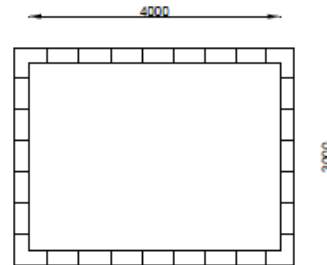
Additional room with bathroom

OPTION D



Double door leading out of garage

OPTION E



Pool & pump (3 x 4m)

3-BED, 2-BATH [SINGLE STOREY]

Total Covered Area:
172sqm

Total Uncovered area:
6sqm

Total area : 178sqm

Parking: 2 in garage, 2 on
driveway



EXTERIOR ON-SITE PHOTOGRAPHS



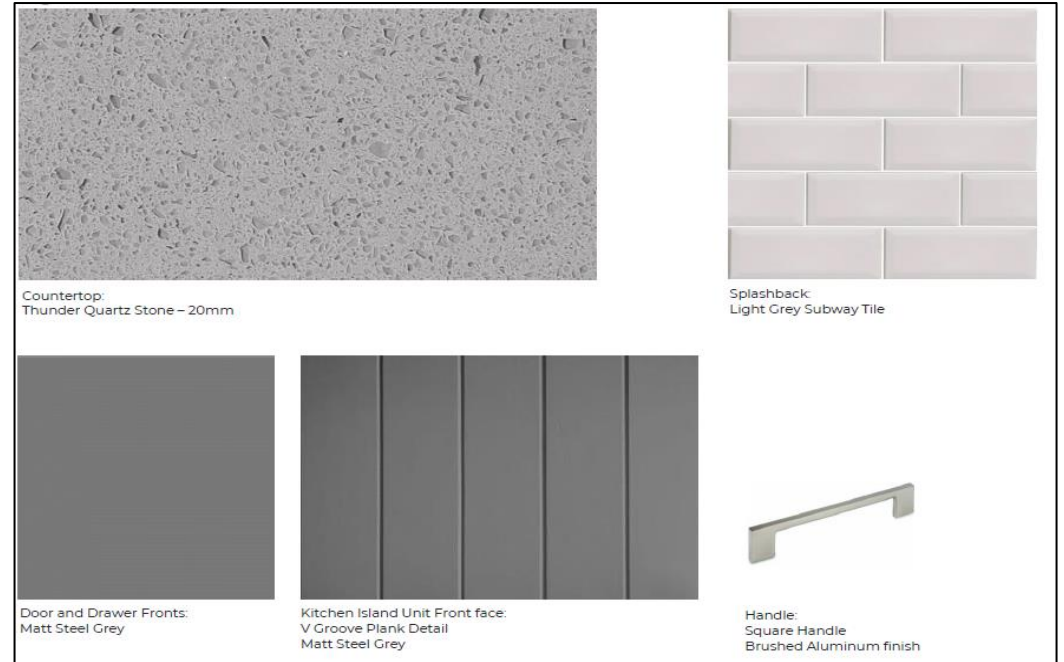
**INTERIOR
ON-SITE
PHOTOGRAPHS**

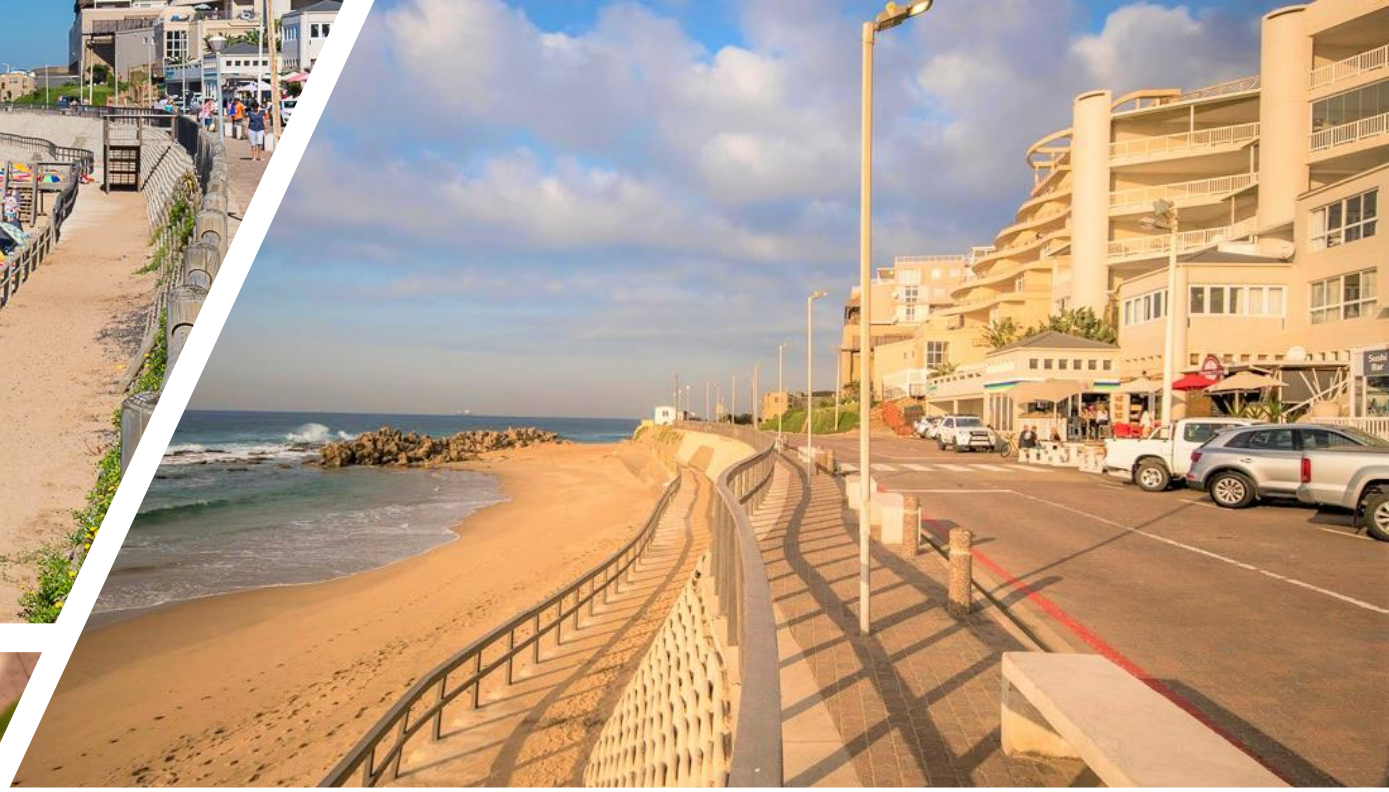


PHOTOGRAPHS
OF CLUB HOUSE
ON-SITE



FOREST LOOK & FEEL





Discover the allure of coastal living at Salta Sibaya coastal estate, where breathtaking sea views meet unparalleled luxury. Immerse yourself in the serenity of nature, embrace a vibrant community, and indulge in a lifestyle beyond compare.
Your dream coastal retreat awaits.



